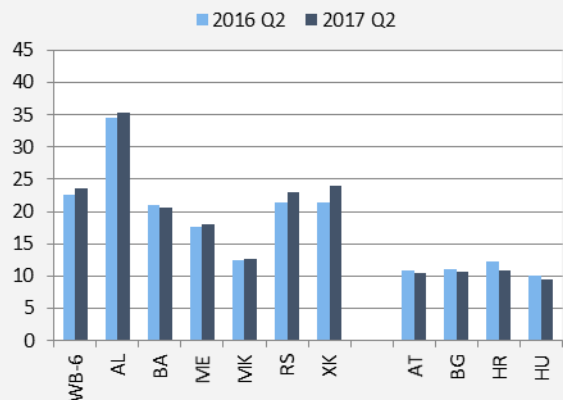


Kosovo experienced the strongest growth in employment among the Western Balkan countries between the second quarter of 2016 and the second quarter of 2017, with employment primarily generated in construction, health, and manufacturing industries. Despite a significant increase of 9.2 percent, employment remains low at 30.6 percent. About a quarter of the workforce is self-employed, and female employment rates are the lowest in the Western Balkans (13.1 percent) and grew by 2.8 percent only. In contrast to all other countries in the Western Balkans where unemployment decreased and reached historical lows in some cases, unemployment in Kosovo increased from 27.4 percent in 2016 to 30.4 percent in 2017. Kosovo also stands out as the country with the highest rate of youth unemployment (over 50 percent), the largest share of youth among the long-term unemployed (over 20 percent), and the highest share of youth neither in employment, education nor training (NEETs) (almost 30 percent). In response to these issues, Kosovo is establishing an employment agency to support job matching and reforming its labor law to incentivize the hiring of women.

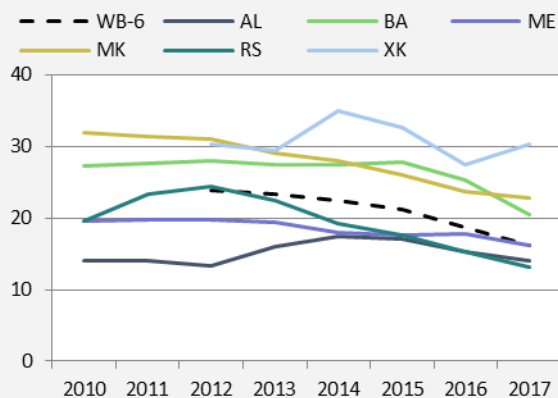
EMPLOYMENT GROWTH				Period
	Total	%		
Number of new jobs	30,200	9.2		Q2 2016 - Q2 2017
Among women	2,000	2.8		Q2 2016 - Q2 2017
Among youth	6,400	18.2		Q2 2016 - Q2 2017
Among low skilled	2,100	3.5		Q2 2016 - Q2 2017
KEY LABOR MARKET INDICATORS				
	Total	Male	Female	Period
Labor force participation (15-64 years)	44.1	66.6	20.7	Q2 2017
Employment rate (15-64 years)	30.6	47.4	13.1	Q2 2017
Unemployment rate (15+ years)	30.4	28.6	36.5	Q2 2017
Long term unemployment (15+ years)	22.0	20.9	25.6	Q2 2017
Youth unemployment (15-24 years)	50.7	46.8	60.2	Q2 2017
NEETs (15-24 years)	29.5	25.9	33.6	2016
WAGES				
	Total	Period		
Average monthly gross wages, EUR	519	2016		
Average monthly gross wages, EUR (PPP)	1,169	2016		
Change % EUR (PPP)	0.8	2015-2016		



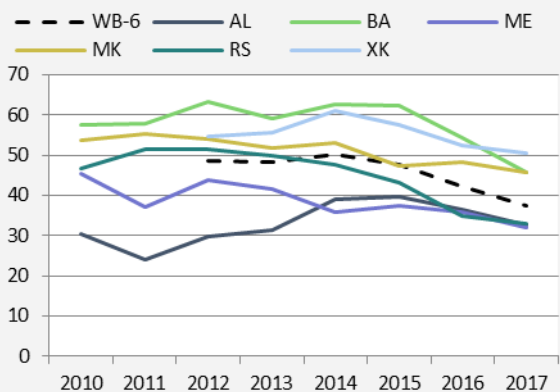
Self-employment, share of total employment (15-64), in %



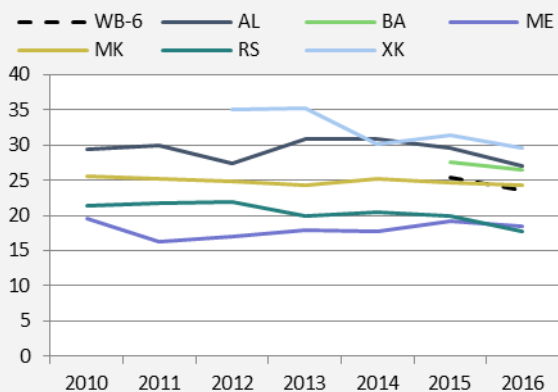
Unemployment rates, in %



Youth unemployment rates (15-24), in %



NEET rates (15-24) in % of respective population



AL: Albania BA: Bosnia & Herzegovina ME: Montenegro MK: FYR Macedonia RS: Serbia XK: Kosovo WB: Western Balkans

AT: Austria BG: Bulgaria HR: Croatia HU: Hungary

Data and SEE Jobs Gateway

This country flyer is based on data presented in the Western Balkans Labor Market Trends 2018 report, a collaboration between the World Bank and the Vienna Institute for International Economic Studies (wiiw). The data has been collected directly from national statistical offices of the six Western Balkan countries, with the objective of harmonizing data as much as possible across countries. The database covers a unique and detailed set of labor market indicators based on Labor Force Survey (LFS) data for the Western Balkan countries. The dataset is harmonized across indicators, age groups and educational attainment. Overall, the database covers four parts: (i) Key economic indicators, (ii) Labor market indicators, (iii) Labor market data on a sub-national level and (iv) Data on earnings and unit labor costs. All data and more is available at the South-East Europe Jobs Gateway Database at <http://seejobsgateway.net>.

The SEE Jobs Gateway is a Community of Practice for labor market policies in the Western Balkans, bringing together policy makers, academics and experts from international organizations. Most members are from or have an interest in the Western Balkans, comprising of Albania, Bosnia and Herzegovina, FRY Macedonia, Kosovo, Montenegro and Serbia.

